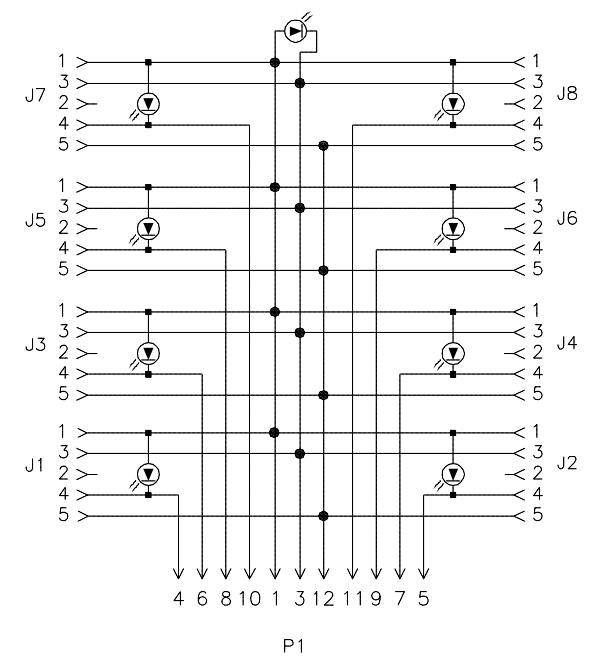
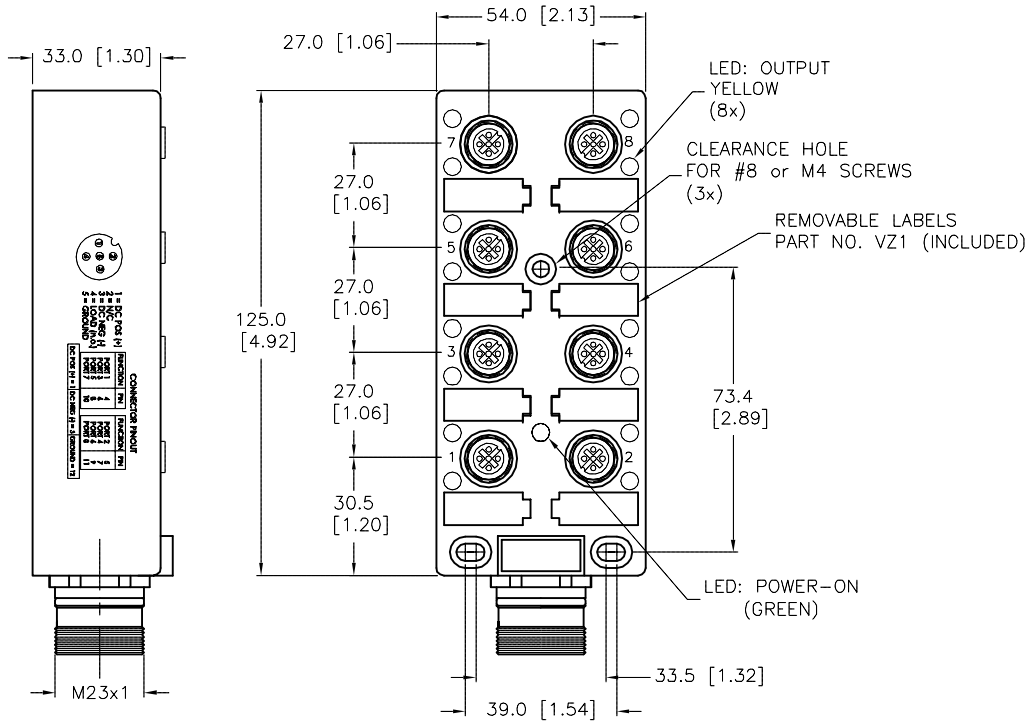


SPECIFICATIONS	
HOUSING MATERIAL/COLOR	NYLON/YELLOW
MOLDED HEAD MATERIAL/COLOR	TPU/BLACK
CONTACT MATERIAL/PLATING	GOLD-PLATED BRASS
CONTACT CARRIERS/COLOR	NYLON/BLACK (J1-J8)
COUPLING NUT MATERIAL/PLATING	NICKEL-PLATED BRASS
SEALING RING	VITON O-RING
OPERATING CURRENT	4 A/PORT, 5 A TOTAL
OPERATING CURRENT (PER LED)	10.0 mA MAX AT 48 VDC SUPPLY VOLTAGE
OPERATING VOLTAGE	10-48 VDC
TEMPERATURE RANGE	-30°C to +80°C (-22°F to +176°F)
PROTECTION CLASS	IEC IP67, ONLY WHEN ALL RECEPTACLES ARE COVERED WITH PLUGS OR CONNECTORS.



SOURCE DRAWING - FOR REFERENCE ONLY



CLOSURE CAPS (INCLUDED)

RELATED DOCUMENTS 1. 2. 3. 4.	3RD ANGLE PROJECTION 	THIS DRAWING IS CONFIDENTIAL AND THE PROPERTY OF TURCK INC. USE OF THIS DOCUMENT WITHOUT WRITTEN PERMISSION IS PROHIBITED.		3000 CAMPUS DRIVE MINNEAPOLIS, MN 55441 1-800-544-7769 (763) 553-7300 (763) 553-0708 fax turck.com	
		MATERIAL SEE SPECS	DRFT RJP APVD	DATE 9/5/96 SCALE 1=2.0	DESCRIPTION VB 80-N7X9-CS12
FINISH	ALL DIMENSIONS DISPLAYED ON THIS DRAWING ARE FOR REFERENCE ONLY CONTACT TURCK FOR MORE INFORMATION	UNIT OF MEASUREMENT MILLIMETER [INCH]		IDENTIFICATION NO. U7012-1	
F UPDATED CLSURE CAPS REV DESCRIPTION		TV 09/15/15 48811 BY DATE ECO NO.	DO NOT SCALE THIS DRAWING		REV F

F	UPDATED CLSURE CAPS	TV	09/15/15	48811
REV	DESCRIPTION	BY	DATE	ECO NO.